



DX1525

The DX1525 system has been designed to be our most compact and cost effective fluid conditioning unit on offer.

Engineered to fill a gap in our product offerings for smaller volume systems the DX1525 is ideal for keeping fluid in reservoirs upto 1200 litres in optimum health,

With budgets for maintenance ever decreasing Delta-Xero wanted to ensure that all market segments like plastic extrusion or the wind turbine industry could easily and cost effectively reduce their carbon foot print.

The DX1525 can also be supplied with a number of options to provide an effective fluid conditioning and monitoring package to suit the majority of systems.

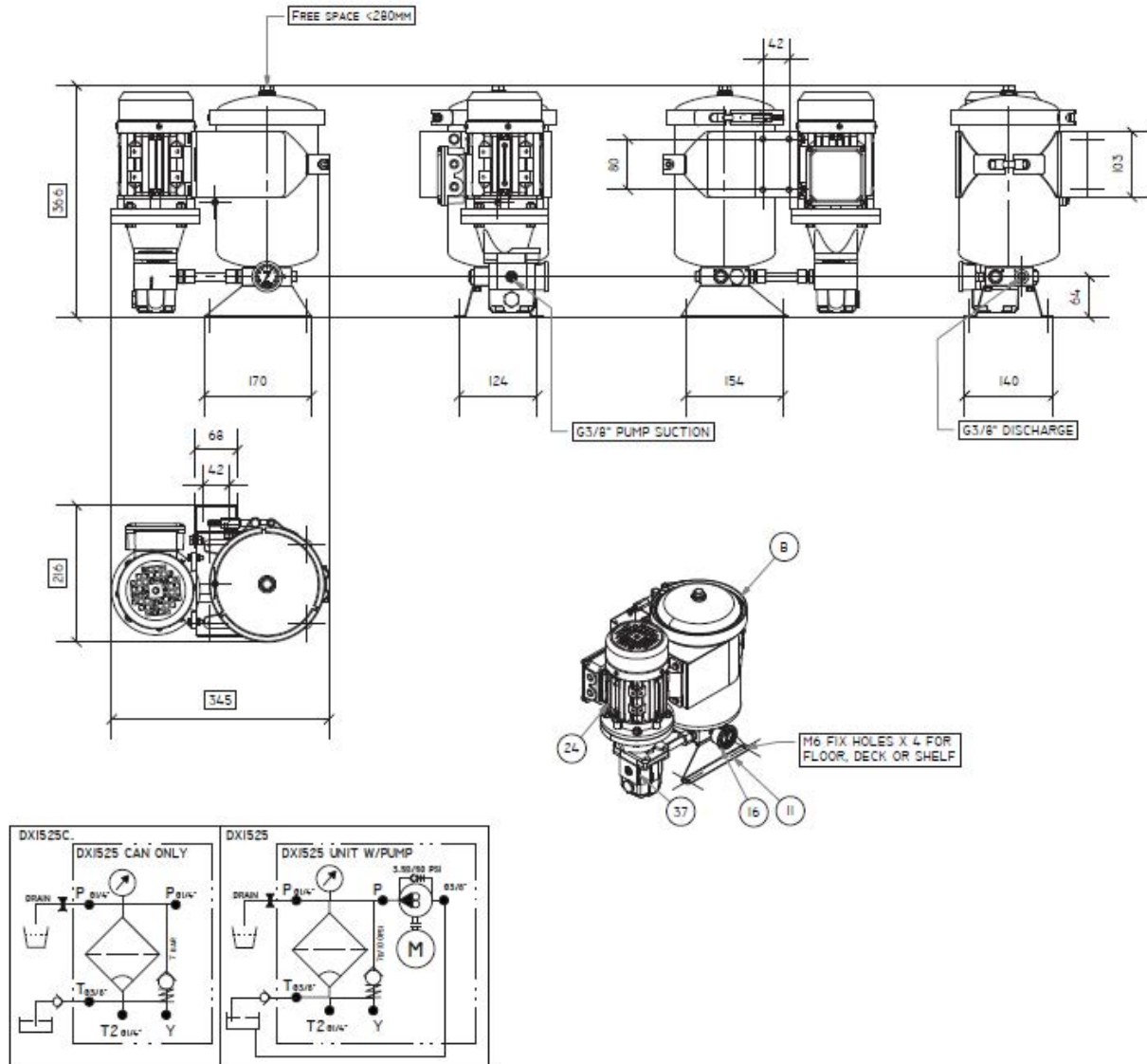
These units come both floor and wall mountable.



DX1525

Drive Input	Electric																										
Connection Ports	3/8" BSP In & Out																										
Flow Indicator	Visual																										
Suggested System Volume	Up to 1200l @ 32cSt																										
Flow Rate	<table border="1"> <thead> <tr> <th>Approx flow at 2.7 bar:</th> <th>32 cSt</th> <th>46 cSt</th> <th>68 cSt</th> <th>100 cSt</th> <th>220 cSt</th> <th>320 cSt</th> </tr> </thead> <tbody> <tr> <td></td> <td>1.25 l/min</td> <td>1.0 l/min</td> <td>0.8 l/min</td> <td>0.6 l/min</td> <td>0.4 l/min</td> <td>0.2 l/min</td> </tr> <tr> <th>Oil Volume</th> <td>1200 ltrs</td> <td>940 ltrs</td> <td>800 ltrs</td> <td>640 ltrs</td> <td>480 ltrs</td> <td>240 ltrs</td> </tr> </tbody> </table>						Approx flow at 2.7 bar:	32 cSt	46 cSt	68 cSt	100 cSt	220 cSt	320 cSt		1.25 l/min	1.0 l/min	0.8 l/min	0.6 l/min	0.4 l/min	0.2 l/min	Oil Volume	1200 ltrs	940 ltrs	800 ltrs	640 ltrs	480 ltrs	240 ltrs
Approx flow at 2.7 bar:	32 cSt	46 cSt	68 cSt	100 cSt	220 cSt	320 cSt																					
	1.25 l/min	1.0 l/min	0.8 l/min	0.6 l/min	0.4 l/min	0.2 l/min																					
Oil Volume	1200 ltrs	940 ltrs	800 ltrs	640 ltrs	480 ltrs	240 ltrs																					
Particulate Removal	From 0.1 µ																										
Weight	13 kg																										
Dimensions	H 386 mm x D 230 mm x L 435 mm																										
Material	SS304, 316 and Aluminum																										
DXO-1525 Cartridge QTY	1																										

General Arrangement + Schematic



Cartridge Data: DXO-1525

Contaminated weight:	Up to 2.5kg
Water holding capacity, free and bound:	Up to 1.8 litres
Material insert:	PP Cellulose mix

